



Agilent PXI Matrix Switch Modules

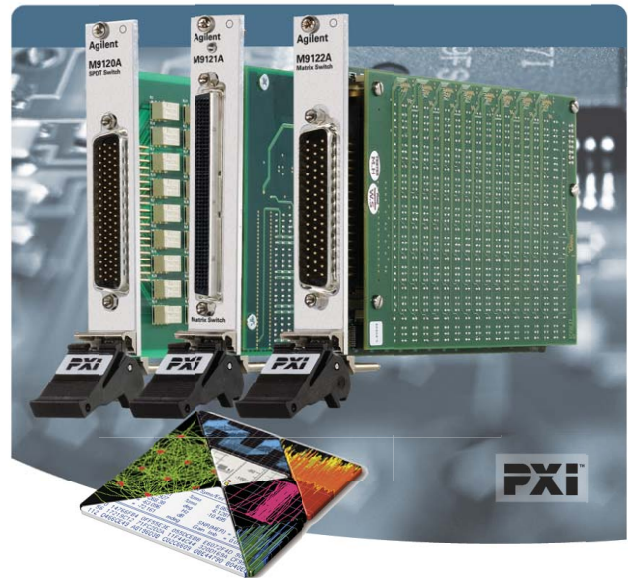
DISCOVER the Alternatives...

Industries and Applications

- Aerospace/defense
- Automotive
- Electronic test
- Medical
- Semiconductor

Product Description

The PXI matrix switch modules deliver medium- to high-density switching of multiple channels in a single instance. Any row can be connected to any column—ideal for routing multiple signals between the device under test and instruments.



Models	
M9120A	4x32, 2-wire, armature relays
M9122A	8x32, 1-wire, armature relays

... Agilent **Modular** Products

Main Features and Benefits

Product features	Your benefit
Up to 256 1-wire crosspoints	Connect multiple points for high-pin-count applications
Software drivers support the most common programming environments	Work in your environment of choice and reduce development time
Optional connector block, soft front panels, and Agilent Connection Expert	Fast and easy installation and configuration

Specifications and Characteristics

Hardware	M9120A	M9122A
Channels	4x32	8x32
Switch type	2-wire, armature	1-wire, armature
Max volts (CAT 1) (<i>typ</i>)	100Vrms	100Vrms
Max switch/carry rating (<i>typ</i>)	2.0A	2.0A
Max power (<i>nom</i>)	60W	60W
Bandwidth (<i>nom</i>)	7.5MHz	5MHz
Connectors	78 Dsub block/cable	50 Dsub block/cable

Chassis slot compatibility: cPCI (J1), PXI-1, PXIe Hybrid



Agilent Technologies

Software Information

Operating systems	Microsoft Windows® XP Microsoft Windows® Vista (32/64-bit) Microsoft Windows® 7 (32/64-bit)
Standard compliant drivers	IVI-COM, IVI-C, LabVIEW, MATLAB
Supported application development environments (ADE)	VisualStudio® (C/C++,C#, VB.NET), LabVIEW, LabWindows/CVI, MATLAB, VEE
Agilent IO Libraries	Includes: VISA Libraries, Agilent Connection Expert, IO Monitor

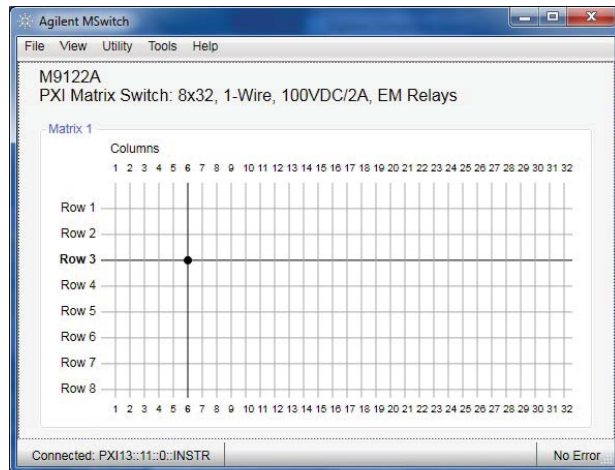


Figure 1. Soft front panel



Figure 2. PXI connector block

Advantage Services: Warranty

Agilent Advantage Services is committed to your success throughout your equipment's lifetime.

R-51B-001-3C	1-year, return-to-Agilent warranty extended to 3 years
--------------	--

Microsoft Windows and Visual Studio are either registered trademarks or trademarks of Microsoft Corporation in the United States and/or other countries.

PCIe® is a registered U.S. trademark and/or service mark of PCI-SIG.

Ordering Information

Model	Description
M9120A	PXI matrix switch: 4x32, 2-wire, 125V/2A, armature relays
M9122A	PXI matrix switch: 8x32, 1-wire, 2A, armature relays

Related products

M9018A	18-slot PXIe chassis
M9021A	PCIe® cable interface
M9102A	128-ch, 1-wire multiplexer switch
M9131A	64-ch SPDT general purpose switch
M9187A	32-ch digital I/O

Accessories

M9120A	
Y1181A	PXI connector block: 78-pin, shielded, female DSub (recommended)
Y1187A	PXI connector cable: 78-pin, male-to-female, 1Meter
Y1188A	PXI connector cable: 78-pin, male-to-female, 2Meter
M9122A	
Y1180A	PXI connector block: 50-pin female DSub (recommended)
Y1185A	PXI connector cable: 50-pin, male-to-female, 1Meter
Y1186A	PXI connector cable: 50-pin, male-to-female, 2Meter

Discover Agilent ...

www.agilent.com
www.agilent.com/find/modular
www.agilent.com/find/pxi-switch
 USA: (800) 829-4444



For more information on Agilent Technologies' products, applications, or services, please contact your local Agilent office. The complete list is available at: www.agilent.com/find/contactus

Product specifications and descriptions in this document subject to change without notice.

© Agilent Technologies, Inc. 2011 Printed in USA, November 28, 2011
5990-6355EN



Agilent Technologies